

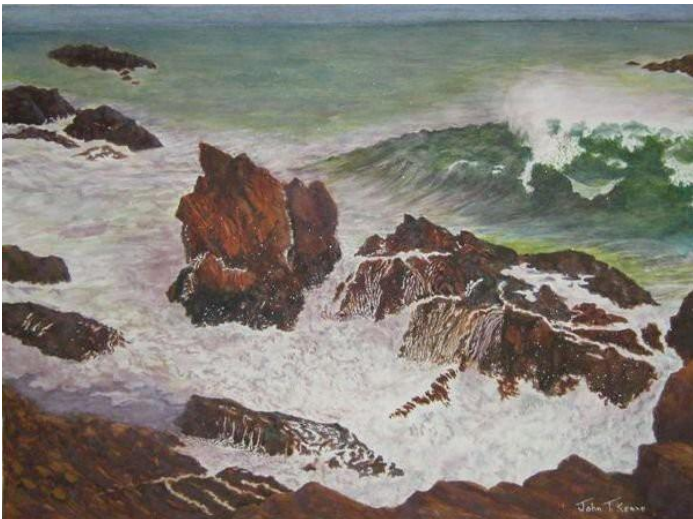
Coastal



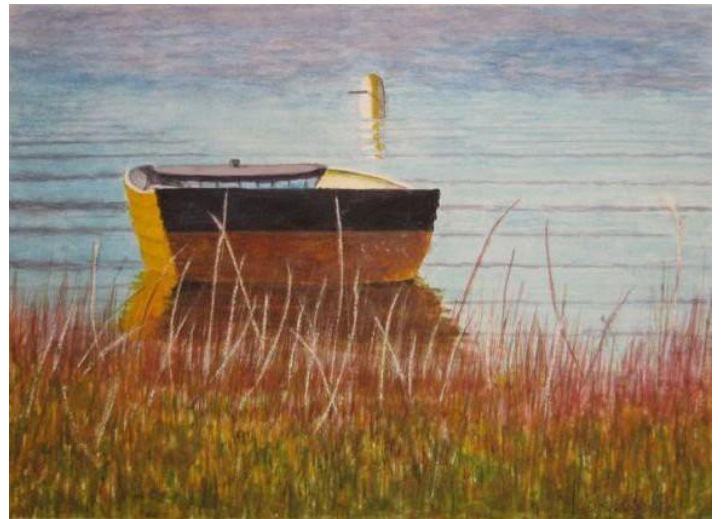
Along the High Dunes, 18 x 24, oil on canvas



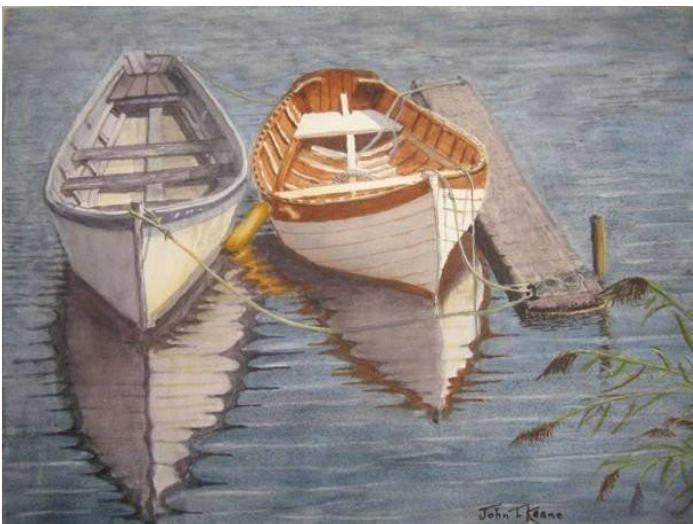
After the Storm, 18 x 24, watercolor
(Nova Scotia, Peggy's Cove, the day after Hurrican Earl)



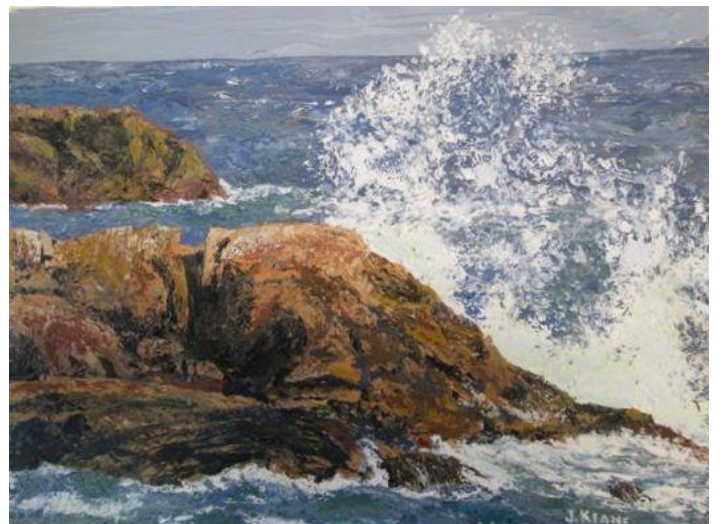
Undeclared, 18 x 24, watercolor
(Rockport, MA)



Drifting at Anchor, 12 x 14, watercolor
(Eastham, MA shore)



Day of Rest, 12 x 14, watercolor
(Essex River harbor area)



Unmovable, 12 x 15, acrylic



Along the Coast, 18 x 24, oil on canvas



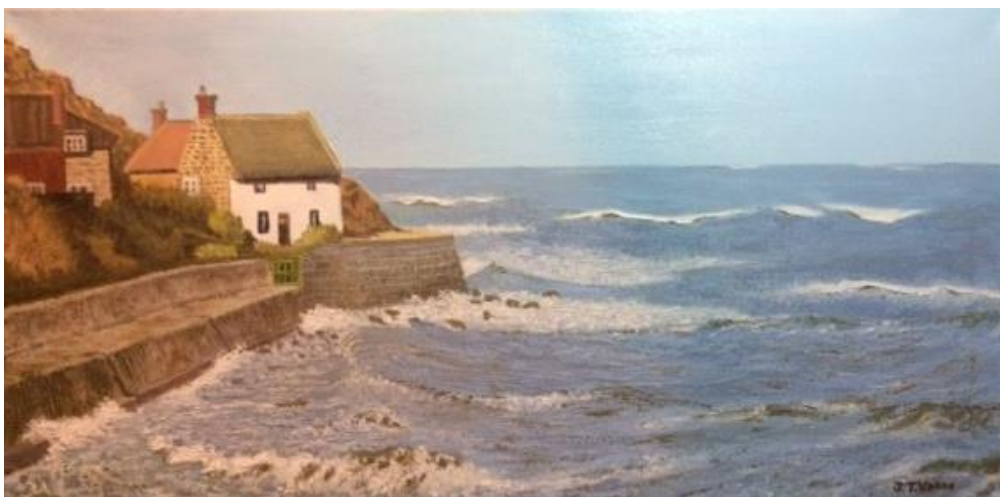
Over the Marsh (Ipswich, MA), 11 X 14, oil on canvas



**Passing the Lighthouse, 12 x 16, oil on canvas
(Woods Hole, MA)**



**Hurricane Jose at Eastham 2017, 9 x 11, oil on canvas
by pallet knife**



Yorkshire Coast, 12 x 24, oil



Harbor in Yorkshire, 12 x 24, oil



Late Afternoon, 18 x 20, oil on canvas